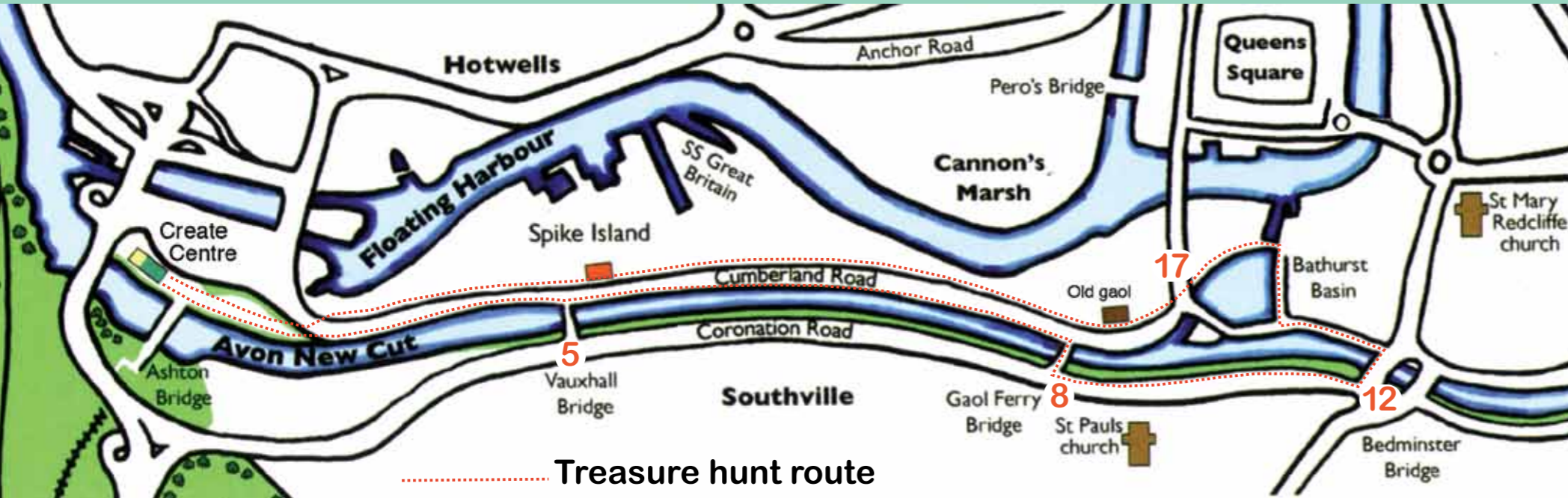
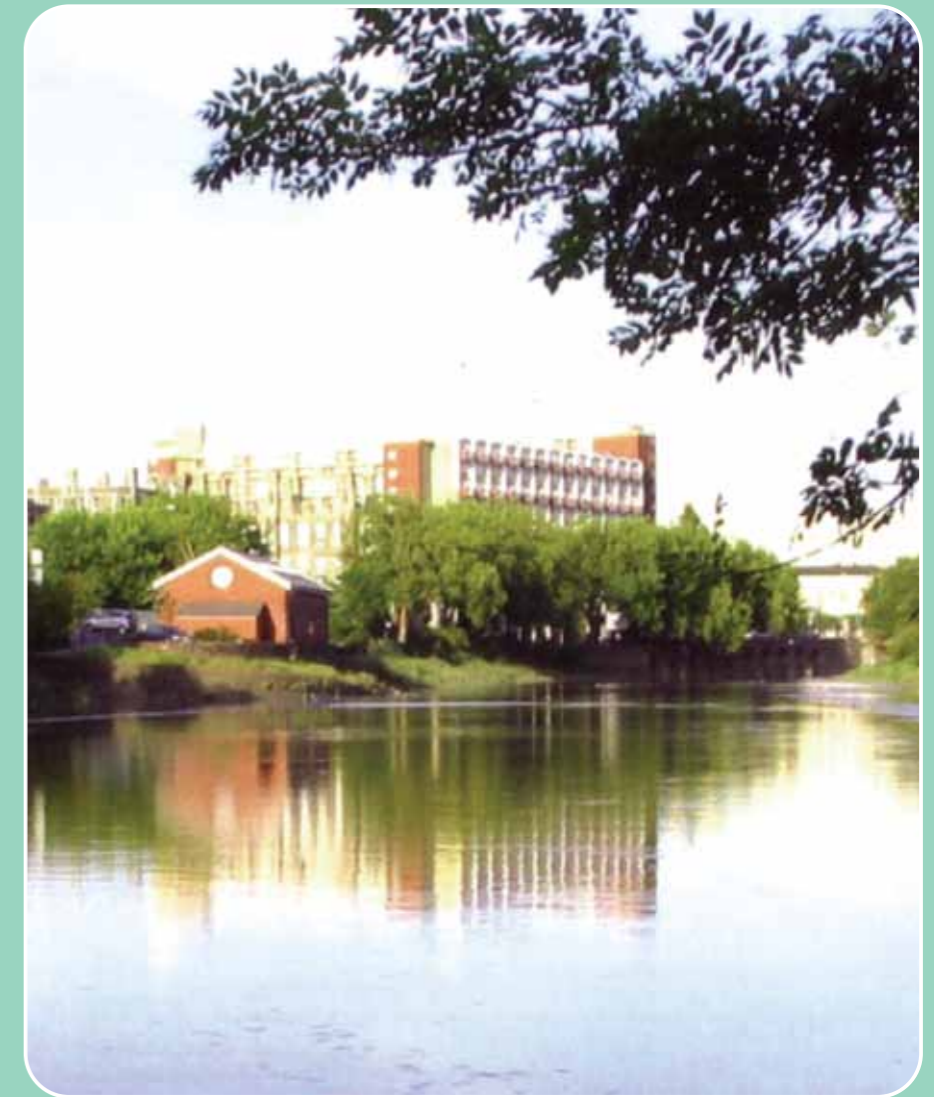


This map shows the approximate location of the treasures shown overleaf.



Avon New Cut Treasure Hunt

We invite you to walk around the Cut and spot the images shown on this sheet.



Answers are available on the FrANC website: www.franc.org.uk

The Avon New Cut

is a tidal waterway running from Totterdown to Cumberland Basin in Bristol. It was excavated between 1803 and 1809 as an essential part of the development of Bristol's Floating Harbour. New industries grew along its banks and passenger boats used the Cut until the late 1930s. The Cut is still vitally important to the function of the City Docks and the surrounding area for drainage. It is a valuable wildlife corridor and a source of enjoyment for people living in the centre of Bristol.

The Friends of the Avon New Cut

is a group of local people promoting a greater understanding and appreciation of the Cut, including its history, wildlife and essential role in the city. We run meetings and events, organise clean-up sessions, and publish regular newsletters.



Treasure hunt images: Jo Young
Cover image: Dave Morgan-Davies

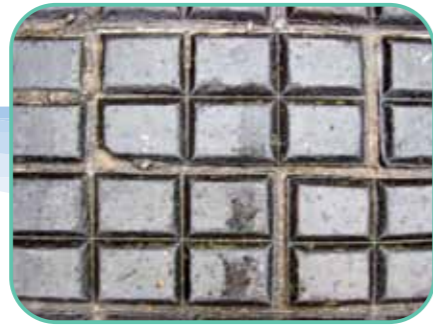


Produced by the Friends of the Avon New Cut.

www.franc.org.uk



1



2



3



4



5



6



20



10



9



8



7



19



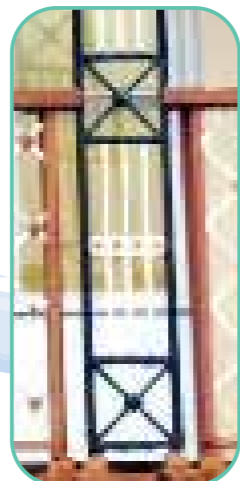
11



12



13



18



17



16



15



14

Start at the Create Centre or Bedminster Bridge, or anywhere between the two. See map overleaf.