

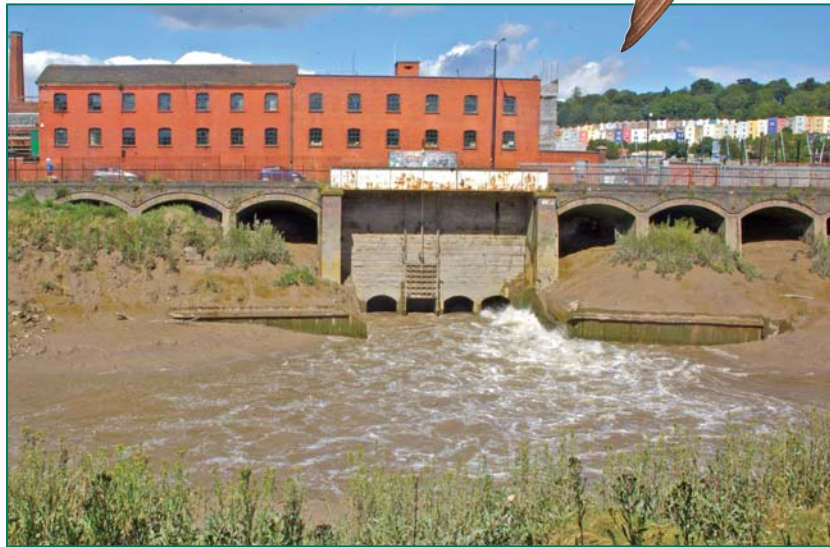


House martin

South Bristol Avon New Cut



Kingfisher

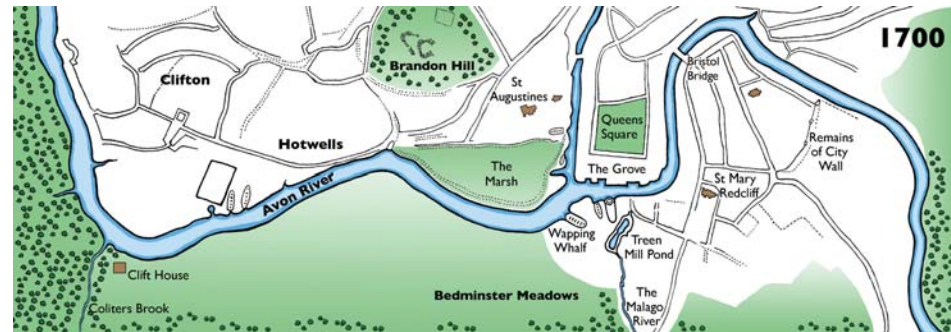


Operation of one of the shallow sluices at low tide

Welcome to Avon New Cut

Underfall Yard

The New Cut was dug in the early 19th Century to create a tidal-free “Floating Harbour” so ships could berth safely. The damming of the river to make the harbour created new land where William Jessop constructed a weir, known as the “Overfall”, to allow surplus water from the harbour to flow back into the New Cut.



River Avon in 1700

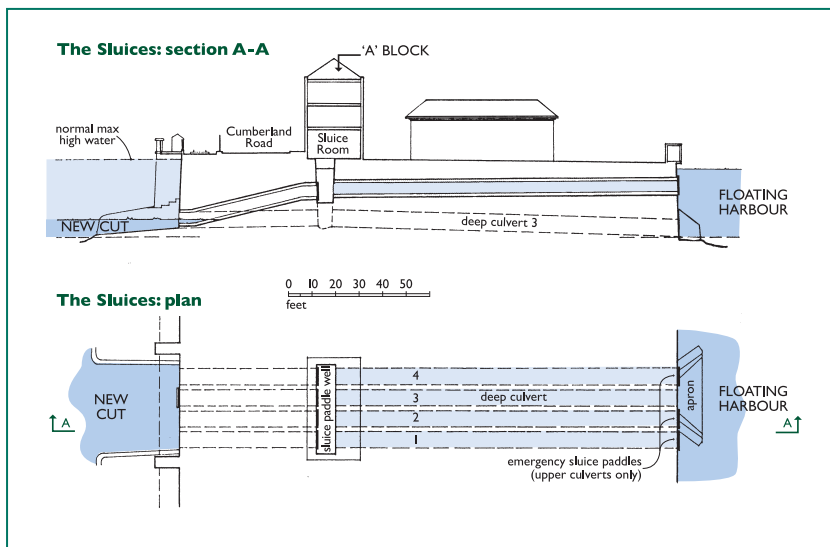
By the 1830s, however, the Floating Harbour was suffering from severe silting. Isambard Kingdom Brunel proposed a solution whereby, in place of the “Overfall”, three shallow sluices and one deep scouring sluice were constructed between the harbour and the New Cut.

The Sluices

When the deep sluice opens at low tide, a powerful undertow sucks the silt into the river, to be carried away on the next tide. The shallow sluices are used to adjust the water level in the Floating Harbour. This “Underfall” system was re-built in the 1880s with longer sluices, which are located in the Underfall Yard under ‘A’ Block building. Since 1988, the sluices are operated automatically on an almost daily basis.

Wildlife

Many different types of birds can be seen along the New Cut. Those that have been observed on the riverbank in the vicinity of the sluice gates that open onto the New Cut (located immediately to the right of this Interpretation Board) include the black-headed gull, mallard, common sandpiper, house martin and the occasional kingfisher.



Sluice system in Underfall Yard



Floating Harbour and New Cut in 2015

Friends of the Avon New Cut (FrANC) is working to improve the Cut and its wildlife. If you would like to find out more, or to get involved, please visit our website at www.franc.org.uk, or contact us via email at contact@franc.org.uk

© Design: Inkwood Design | Illustrations: Abi Stubbs | Photograph kindly provided by Richard Clutterbuck
Drawing of sluice system in Underfall Yard kindly provided by the Underfall Yard Trust.

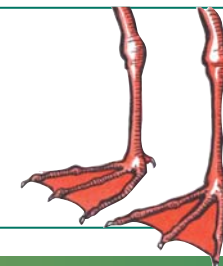
This Interpretation Board was jointly funded by the Neighbourhood Partnerships for Greater Bedminster and Cabot, Clifton and Clifton East.



Black-headed gull

Wildlife Fact:

You can tell the difference between gulls by their legs; black-headed gulls are red (opposite), lesser black backed gulls are yellow and herring gulls are pink!



parks for people and wildlife

